

WHY CIFA



Truck Pumps
STEELTECH Series



**WHY
CIFA**



MORE THAN 15.000 TRUCK PUMPS SOLD IN THE WORLD

It was the end of 60's when Cifa produced the first truck pump. Since then, Cifa has been designing, producing and developing the most advanced technology, bringing every year to the market new reliable solutions. Solutions to prove that CIFA truck pumps are better than ever. Always.



READY FOR DELIVERY



MANUFACTURING FACILITIES



LEAN PRODUCTION

LEASING



Available in Italy, Russia, China, South Africa,
Australia, USA and Germany

MOUNTED ON ALL TRUCK BRANDS



CIFA truck pumps can be mounted on all truck brands.
According to CIFA truck specifications documentation

ITALIAN DESIGN



TRAINING FOR OPERATORS



PLACING BOOMS

Available lengths to reach all distances: from 65 to 190 feet.



STABILIZATIONS

Different types of stabilization in order to guarantee a safe work in a small area.



PUMPING UNITS

Two open loop types and three closed loop types according to the desired way of pumping.



CONTROL SYSTEMS

Designed and positioned to make the job easier and to speed up all the operations.



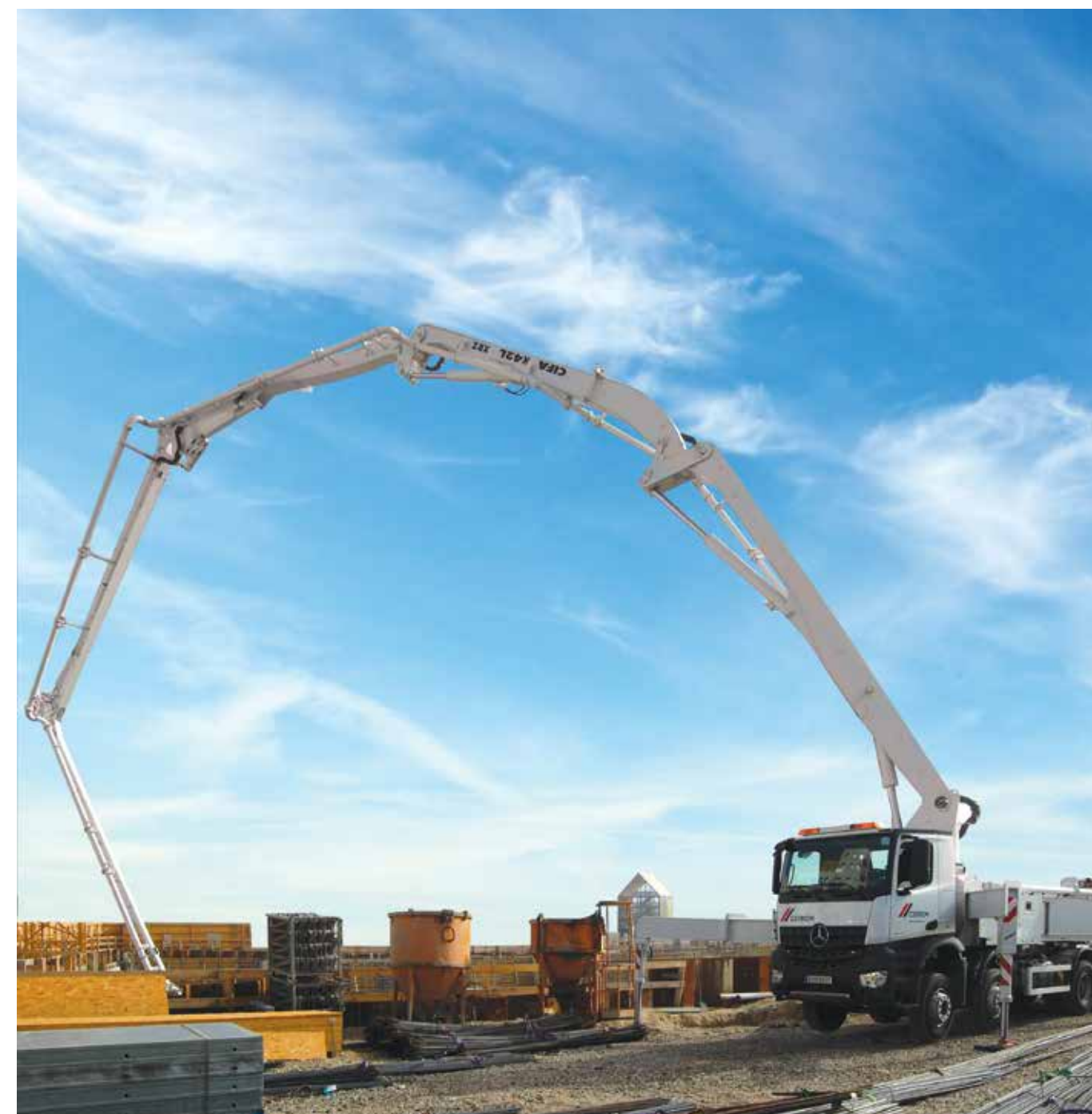
SAFETY

Different systems to work and move the boom in all its configurations in total safety.



FINISHING

Customized painting available upon customers' request.





PLACING BOOM

STRENGTH AND RELIABILITY:

The booms mounted on CIFA truck pumps combine both strength and reliability. Each section of the boom has been designed for maximum structural resistance and fatigue strength. These advanced booms reduce to the minimum the areas subjected to stress intensification when in operation.



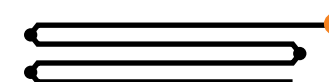
VERSATILITY AND FLEXIBILITY:

Different configurations of the booms on CIFA truck pumps ensure the greatest operative versatility and enable to reach almost any part of the construction yard, even those accessible with the most difficulty. Complete working flexibility together with great working speed, allows the complete extension of the boom and its perfect positioning in few minutes.



Z Type

Quick opening operations for concrete pouring near and far from the truck pump.

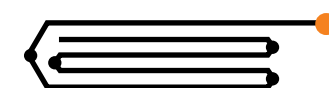


Available for:

K36L-5 - K38L

RZ Type

Ideal for 5 and 6 sections boom. It provides maximum flexibility by combining R+Z solutions.



Available for:

K42L

The structural strength and stiffness of the sections ensure limited oscillations even on longer booms.

The working speed, guarantees the complete extension of the boom and a quick and perfect positioning.

FOLDING SYSTEMS



STABILIZATION

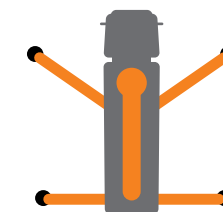


The front stabilization is available in four design concepts: single horizontal, single, double and triple telescopic-X-style outriggers. The rear stabilization is available in three design concepts: fixed, single extension and swing-out. Each machine has its stabilization system according to the size of the boom.



Front: **Single telescopic X style**
Rear: **Single horizontal**

Available for:
K36L-5



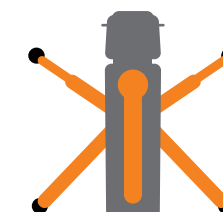
Front: **Single telescopic X style**
Rear: **Swing-out**

Available for:
K38L



Front: **Double telescopic X style**
Rear: **Swing-out**

Available for:
K42L



All outriggers are designed to stabilize the machine in the right way in extraordinary tight spaces.

The sequences of the extension phase are quick in order to accelerate the stabilization.

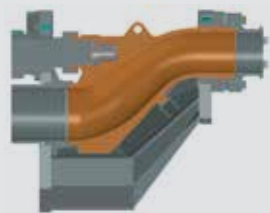
Each outrigger can be used as a tank with a capacity ranging from 400 to 700 liters.





PUMPING UNIT

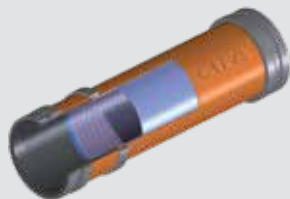
Completely removable, the pumping unit ensures gentle, continuous and regular flow. This technology guarantees an extremely efficient system for pumping different types of concrete, with aggregates of all sizes, reducing the number of cycles per minute while maintaining the same flow rate, thus ensuring less wear and longer life.



“S” VALVE:
The structure is made with varying thickness to achieve maximum resistance to wear even when using difficult types of concrete.



WEAR RING AND WEAR PLATE:
The ring and the plate are made of special anti wear material against abrasion and stress due to the concrete flow.



CIFA LONG LIFE PIPES MADE BY CIFA
CIFA truck pumps have long life pipes as standard equipment.

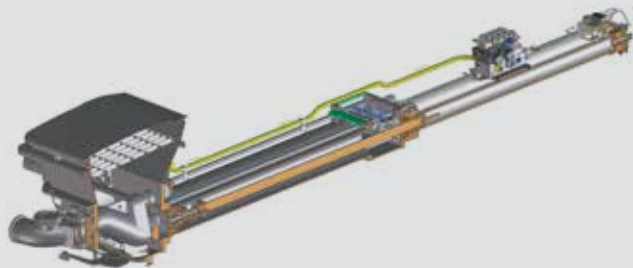


CIFA truck pumps have the first bend outside the pumping unit in long life pipes as standard equipment.

Open Loop: Hydraulic management

HP1606H

Available for:
K36L-5 - K38L - K42L



Closed Loop: Electronic or hydraulic management



HP1608EC

Available for:
K36L-5 - K38L - K42L



HP1808ECX

Available for:
K42L

The quiet pumping system

A revolutionary system to drastically reduce vibrations, wear and noise. The “core” of the vibration is caused by the pumping unit movement therefore the system is placed in the 3 main fixing points and, thanks to the rubber absorbers, it reduces the vibrations transferred to the frame keeping the boom still while pumping.

- Low vibration
- Low noise
- Higher comfort of use
- Improved balancing while working
- Less wearing of key components



Rear Damping System



Front Damping System

PUMPING UNITS		HP1606H	HP1608EC	HP1808ECX
MAX. THEORICAL OUTPUT	yd³/h	210	210	235
MAX. PRESSURE ON CONCRETE	psi	769	1160	1203
MAX. NUMBERS OF CYCLES PER MIN.	n	30	31	27
CONCRETE CYLINDERS (DIAM. X STROKE)	inch	9" x 83"	9" x 83"	10" x 83"
CONCRETE HOPPER CAPACITY	gal	145	145	159
HYDRAULIC CIRCUIT	type	open	closed	closed



CONTROL SYSTEMS



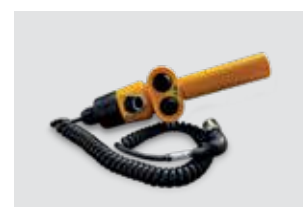
DETACHABLE ELECTRICAL SYSTEM

The electrical system can be detached for easy maintenance.



HYDRAULIC OUTRIGGERS CONTROL

Hydraulic controls on both sides of truck pump. The machine emergency stop is also positioned nearby.



WIRED VIBRATOR AND HORN REMOTE

Convenient cable control dedicated to the mixer driver. It can be used from both sides of the hopper.



BOOM PROPORTIONAL DISTRIBUTOR

Ergonomic hydraulic controls for boom.



REMOTE CONTROL

Comfortable and lightweight for boom control and the management of the main machine functions. Different models and brands available.



REAR CONTROL PANEL

Control panel positioned on the rear side.

Easytronic

Machine management system for Steeltech series pumps with open loop pumping units

SILVER (Standard)



DISPLAY LCD 5"

The standard version includes:

- Pumping unit management
- Diagnostics
- Counters
- Auto vibration

GOLD (Option)

Easytronic Silver

+

LSC - Light Stability Control



Limits the boom slewing angle when any outrigger cannot be fully opened. Includes: Autormp

Smartronic®

Machine management system for Steeltech series pumps with closed loop pumping units

SILVER (Standard)



DISPLAY LCD 7"



PUMPING UNIT MANAGEMENT

Automatic hopper-grid vibration



DIAGNOSTICS

In case of fault, the operator is guided to understand what's the subpart involved and graphically guided to understand the issue



COUNTERS

GOLD (Option)

Standard for Carbotech series (excl. K40H)
Includes SILVER functions plus:



AUTO RPM

Fully adjustable automatic truck RPM management



RAMPS MANAGEMENT

Fully adjustable pumping ramps management



MBE

Max Boom Extension

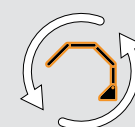


ASC

Advanced Stability Control

Smartronic Advanced

(Add-on Option for Smartronic GOLD)



Automatic Boom Folding and Unfolding

The function allows to open and close the boom automatically using a dedicated command on the radio remote.



ASC 2.0

Gives the possibility to move some boom sections even when the limit of the safety coefficient is reached.



Boom Antibouncing System

The Anti-Bouncing function strongly reduces boom oscillations (up to -25%).



Radio remote control with display

OPTIONS

LIGHTS HOLDER UNDER THE HOPPER



CIFA VISTA: Remote machine monitoring



Pumping unit dampening

TWO DIFFERENT TYPES OF SHUT OFF VALVE AS OPTION

The shut-off valve stops immediately the flow of the concrete.



Shut Off valve on endhose



Shut Off valve in pipeline



Activation by remote control



High pressure water pump



Air compressor for pipeline cleaning



Hopper cover



Rear camera

List of other components available on demand



Wood stocks holders



Ladder to fuel tank access



Light on boom

DATA SHEET

STEELTECH



K36L-5

PLACING BOOM	123
PUMPING UNIT	160 m³/h 53 bar 210 yd³/hr 768 psi
	160 m³/h 80 bar 210 yd³/hr 1160 psi
DRIVEN BY	GEAR BOX
CHASSIS	3 - 4 AXLES



K38L

PLACING BOOM	B4Z 38/34
PUMPING UNIT	160 m³/h 53 bar 210 yd³/hr 768 psi
	160 m³/h 80 bar 210 yd³/hr 1160 psi
DRIVEN BY	GEAR BOX
CHASSIS	3 - 4 AXLES



K42L

PLACING BOOM	B5RZ 42/38
PUMPING UNIT	160 m³/h 53 bar 210 yd³/hr 768 psi
	160 m³/h 80 bar 210 yd³/hr 1160 psi
	180 m³/h 83 bar 235 yd³/hr 1203 psi
DRIVEN BY	GEAR BOX
CHASSIS	3 - 4 AXLES

Find more info on truck configuration at www.cifa.com



K38L - U.S.A.

JOB SITES



Discover more at www.cifa.com

CIFA North America Inc.

4330 Conifer Court
Union Grove, WI 53182
Office: +1 (262) 835-4022

sales-na@cifa.com

na.cifa.com



CIFA S.p.A.

Via Stati Uniti d'America, 26
20030 Senago (Milano) - Italy
tel. +39.02.990131
fax. +39.02.9981157

sales@cifa.com

www.cifa.com

